



BIBLE reading plan

MARCH 2024

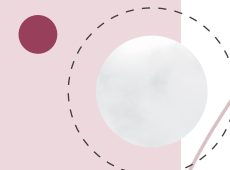
- ☐ DAY 1: Genesis 20:1-8
- ☐ DAY 2: Genesis 20:9-18
- ☐ DAY 3: Genesis 21:1-7
- ☐ DAY 4: Genesis 21:8-21
- ☐ DAY 5: Genesis 21:22-34
- ☐ DAY 6: Genesis 22:1-11
- ☐ DAY 7: Genesis 22:12-24
- ☐ DAY 8: Genesis 23:1-11
- ☐ DAY 9: Genesis 23:12-20
- ☐ DAY 10: Genesis 24:1-11
- ☐ DAY 11: Genesis 24:12-27
- ☐ DAY 12: Genesis 24:28-41
- ☐ DAY 13: Genesis 24:42-54
- ☐ DAY 14: Genesis 24:55-67
- ☐ DAY 15: Genesis 25:1-11
- ☐ DAY 16: Genesis 25:12-26
- ☐ DAY 17: Genesis 25:27-34
- ☐ DAY 18: Genesis 26:1-11
- ☐ DAY 19: Genesis 26:12-22
- ☐ DAY 20: Genesis 26:23-35
- ☐ DAY 21: Genesis 27:1-13
- ☐ DAY 22: Genesis 27:14-25
- ☐ DAY 23: Genesis 27:26-35
- ☐ DAY 24: Genesis 27:36-46
- ☐ DAY 25: Genesis 28:1-9
- ☐ DAY 26: Genesis 28:10-22
- ☐ DAY 27: Genesis 29:1-12
- ☐ DAY 28: Genesis 29:13-20
- ☐ DAY 29: Genesis 29:21-35
- ☐ DAY 30: Genesis 30:1-15
- ☐ DAY 31: Genesis 20:16-24

APRIL 2024

- ☐ DAY 1: Genesis 30:25-34
- ☐ DAY 2: Genesis 30:35-43
- ☐ DAY 3: Genesis 31:1-9
- ☐ DAY 4: Genesis 31:10-21
- ☐ DAY 5: Genesis 31:22-35
- ☐ DAY 6: Genesis 31:36-44
- ☐ DAY 7: Genesis 31:45-55
- ☐ DAY 8: Genesis 32:1-12
- ☐ DAY 9: Genesis 32:13-23
- ☐ DAY 10: Genesis 32:24-32
- ☐ DAY 11: Genesis 33:1-11
- ☐ DAY 12: Genesis 33:12-20
- ☐ DAY 13: Genesis 34:1-12
- ☐ DAY 14: Genesis 34:13-23
- ☐ DAY 15: Genesis 34:24-31
- ☐ DAY 16: Genesis 35:1-7
- ☐ DAY 17: Genesis 35:8-15
- ☐ DAY 18: Genesis 35:16-29
- ☐ DAY 19: Genesis 36:1-19
- ☐ DAY 20: Genesis 36:20-43
- ☐ DAY 21: Genesis 37:1-11
- ☐ DAY 22: Genesis 37:12-23
- ☐ DAY 23: Genesis 37:24-36
- ☐ DAY 24: Genesis 38:1-11
- ☐ DAY 25: Genesis 38:12-19
- ☐ DAY 26: Genesis 38:20-30
- ☐ DAY 27: Genesis 39:1-9
- ☐ DAY 28: Genesis 39:10-23
- ☐ DAY 29: Genesis 40:1-11
- ☐ DAY 30: Genesis 40:12-23

MAY 2024

- ☐ DAY 1: Genesis 41:1-13
- ☐ DAY 2: Genesis 41:14-24
- ☐ DAY 3: Genesis 41:25-36
- ☐ DAY 4: Genesis 41:37-46
- ☐ DAY 5: Genesis 41:47-57
- ☐ DAY 6: Genesis 42:1-9
- ☐ DAY 7: Genesis 42:10-17
- ☐ DAY 8: Genesis 42:18-26
- ☐ DAY 9: Genesis 42:27-38
- ☐ DAY 10: Genesis 43:1-14
- ☐ DAY 11: Genesis 43:15-22
- ☐ DAY 12: Genesis 44:23-34
- ☐ DAY 13: Genesis 44:1-9
- ☐ DAY 14: Genesis 44:10-17
- ☐ DAY 15: Genesis 44:18-34
- ☐ DAY 16: Genesis 45:1-15
- ☐ DAY 17: Genesis 45:16-28
- ☐ DAY 18: Genesis 46:1-7
- ☐ DAY 19: Genesis 46:8-27
- ☐ DAY 20: Genesis 46:28-34
- ☐ DAY 21: Genesis 47:1-12
- ☐ DAY 22: Genesis 47:13-22
- ☐ DAY 23: Genesis 47:23-31
- ☐ DAY 24: Genesis 48:1-12
- ☐ DAY 25: Genesis 48:13-22
- ☐ DAY 26: Genesis 49:1-12
- ☐ DAY 27: Genesis 49:13-21
- ☐ DAY 28: Genesis 49:22-33
- ☐ DAY 29: Genesis 50:1-14
- ☐ DAY 30: Genesis 50:15-21
- ☐ DAY 31: Genesis 50:22-26





LEADER GUIDE
SPRING 2024
VOLUME 10 • NUMBER 3

CHRIS BROWN
CONTENT EDITOR

RICK PRALL
WRITER

APRIL-LYN CAQUETTE
PRODUCTION EDITOR

KAITLIN REDMOND
GRAPHIC DESIGNER

BRETT BUCKLAND
MANAGER, STUDENT ONGOING STUDIES

BEN TRUEBLOOD
DIRECTOR, STUDENT MINISTRY

Send questions/comments to:
Chris Brown, Student Publishing
chris.brown@lifeway.com
Lifeway Christian Resources,
200 Powell Place, Suite 100,
Brentwood, TN 37027

PRINTED IN THE UNITED
STATES OF AMERICA.

Explore the Bible: Leader Guide
(ISSN: 2377-0341; Item 005686026)
is published quarterly by Lifeway, 200 Powell
Place, Suite 100, Brentwood, TN 37027
© 2023 Lifeway

For ordering or inquiries, visit www.lifeway.com,
or write Lifeway Customer Service, 200 Powell
Place, Suite 100, Brentwood, TN 37027. For
orders with three or more issues shipped to
one address, mailed monthly, at the ministry
rate, visit lifeway.com/mediaoptions, fax
(615) 251-5933, or write to the above address.

We believe that the Bible has God for its
author; salvation for its end; and truth, without
any mixture of error, for its matter and that all
Scripture is totally true and trustworthy. To
review Lifeway's doctrinal guideline, please
visit lifeway.com/about/doctrinalguidelines.

CSB—Unless otherwise noted, all
Scripture quotations are taken from the
Christian Standard Bible®, Copyright ©
2017 by Holman Bible Publishers. Used by
permission. Christian Standard Bible® and
CSB® are federally registered trademarks of
Holman Bible Publishers.

contents

FEATURES

| | |
|----------------------|-----|
| how to use | 2 |
| sources | 134 |
| quarterly study plan | 135 |

SUGGESTED FOR
THE WEEK OF

SESSIONS

| | | |
|---------|---------------------------------|-----|
| MAR. 3 | SESSION 1: A Call for Sacrifice | 4 |
| MAR. 10 | SESSION 2: God's Guidance | 14 |
| MAR. 17 | SESSION 3: A Son's Deceit | 24 |
| MAR. 24 | SESSION 4: Jacob's Dream | 34 |
| MAR. 31 | SESSION 5: The Empty Tomb | 44 |
| APR. 7 | SESSION 6: Multiplied Blessings | 54 |
| APR. 14 | SESSION 7: Wrestling with God | 64 |
| APR. 21 | SESSION 8: Direction & Identity | 74 |
| APR. 28 | SESSION 9: The Favorite Son | 84 |
| MAY 5 | SESSION 10: In the Prison | 94 |
| MAY 12 | SESSION 11: Rags to Riches | 104 |
| MAY 19 | SESSION 12: A Family Reunion | 114 |
| MAY 26 | SESSION 13: Good from Evil | 124 |



how to use THIS STUDY

PREPARATION

Prior to each group meeting . . .

- Familiarize yourself with the Scripture text by reading each passage twice.
- Read the chapter of Scripture that precedes and follows each session's Bible text for context.
- Read over the Explore Options, Conversation Questions, Now What? questions, and leader notes so that you will be prepared to lead students to discuss and engage the text.
- Refer to the relevant Scripture Commentary for help with questions that come up as you study the text.

ALIGNMENT

Explore the Bible for Students generally covers the same texts as *Explore the Bible* for Adults. Occasionally we will study different verses/passages in order to speak to the unique context of teenagers. Any discrepancies are listed here:

- **Session 1:** Memory verse is Genesis 22:8a; **Session 2:** Added Genesis 24:50-51; **Session 7:** Memory verse is Genesis 32:10a; **Session 9:** Added Genesis 37:3-4; memory verse is Proverbs 14:30; **Session 10:** Added Genesis 39:2-4, omitted verses 10-12; **Session 11:** Added Genesis 41:25-32,38, omitted verses 17-21; **Session 12:** Added Genesis 42:1-7, omitted 45:10-15.

LEADER GUIDE

This teaching plan for the leaders of students contains five sections:

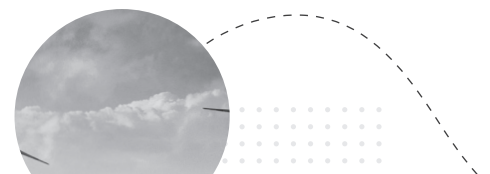
EXPLORE scripture

This portion of the study is designed to introduce you to the passage of Scripture you will be studying and the Central Truth of the text. The **Central Truth** is the main point of the Bible passage that leaders and students will be unpacking throughout the session. **This Week's Focus** seeks to introduce the Central Truth in a manner that will connect with the context in which students live. This section also includes two interactive options for introducing the theme(s) of each session:

- **EXPLORE OPTIONS:** These interactive activities or illustrations introduce the Central Truth of each session. Each session contains two Explore Options. Review both and choose the one that works best for your group.
- **LET'S TALK:** These icebreaker questions introduce the key themes to be unpacked in each session. These questions are designed to get students to open up as study begins. They are not included in the *Daily Discipleship Guide*, since they are conversational in nature.
- **ANIMATED VIDEOS:** *Explore the Bible* for Students has animated videos outlining why the Scripture we are studying matters to students. This quarter has two videos on Genesis 20–50. The video bundle can be purchased at goexplorethebible.com/students.

CONVERSATION questions

- **DISCUSSION QUESTIONS:** These questions are designed to get students to dig into Scripture, training them to look to the Bible for the answers to their questions. All questions are included in the *Daily Discipleship Guide* and are numbered “01–08” so that you can guide students to look at particular discussion questions in their copies of the *Daily Discipleship Guide*.
- **KEY QUESTIONS:** There will sometimes be days when special events or activities cause you to have less time to study the Bible with students than usual. So, in the event that you are pressed for time, we have highlighted the key discussion questions that you don't want to miss in each session.
- **LEADER'S NOTES:** This section contains teaching notes on each session's Scripture as well as answers to discussion questions so that leaders are prepared to teach each week.
- **BE VULNERABLE:** If you open up, oftentimes students will, too. These are challenges for you, as the leader, to share with students about your own personal walk with Christ as a means of pointing them to Christ.
- **CONTEXT NOTES:** *Explore the Bible* for Students contains five types of Context notes designed to help students understand the Bible.



additional RESOURCES

DAILY DISCIPLESHIP GUIDE

The *Daily Discipleship Guide* provides students with all the discussion questions from the *Leader Guide*, as well as five days of Daily Devotions each week. These Daily Devotions train students in studying the Bible on their own. They are perforated so you can send them home with students each week if you prefer hold on to their *Daily Discipleship Guide* for them.

ANIMATED VIDEOS

Each quarter of *Explore the Bible* for Students has 2–3 **animated videos** that unpack why the books of the Bible we are studying matter in the lives of students.

MIDDLE SCHOOL OPTIONS

This **Middle School** versions of the *Leader Guide* and *Daily Discipleship Guide* are available via a curriculum subscription to **Ministry Grid** at curriculum.lifeway.com. They provide the same biblically rich content but with unique Explore Options and discussion questions to help younger students discuss the Bible.

LEADER PACK

The **Leader Pack** can be purchased at lifeway.com/explorethebiblestudents. It includes:

- **Posters** illustrating key truths from each session.
- **Family Connection** guides to equip parents and guardians to discuss the Bible with students.
- **Midweek Studies:** Thirteen sessions of additional verse-by-verse studies to complement each session.
- **PowerPoint templates** to prepare slides.

LEADER TRAINING

Explore the Bible for Students now has a free **Leader Training** document available! This guide helps prepares leaders to teach each week, addresses challenging topics that might come up, and highlights key aspects of the *Leader Guide*. The Leader Training document is available at explorethebible.lifeway.com/studentextras.

These notes are also included in the *Daily Discipleship Guide* so that you may draw students' attention to them in your group meeting:

- » **HISTORY:** Historical setting, including information on key events and characters.
- » **CULTURE:** Highlights the social, political, and cultural environment or similarities to our culture.
- » **THEOLOGY:** Information to help answer questions about God that might arise from the text.
- » **CONTEXT:** Important cross references and notes to help students understand the chapter and book a text is in as well as the wider context of Scripture.
- » **GIVE AN ANSWER:** Teenagers tend to have lots of questions about the Bible. In these notes, we try to anticipate questions that students might have and answer them so you are prepared.

SCRIPTURE commentary

- This portion of the study is located on the right-hand side of each Conversation Question page. The **Commentary** seeks to help leaders understand the Bible text. Words and phrases are in **bold** when they are taken directly from that session's Scripture. Words are in *italics* when they refer to specific Greek or Hebrew words.
- In addition to the Commentary provided in the *Leader Guide*, each quarter of *Explore the Bible* for Students gives leaders access to additional Bible commentaries online at logos.com/explorethebible. Sign up for an account and then use code **EXPLORESRING2024** at checkout to access additional commentaries and study helps on Genesis.

NOW what?

This portion of the study is designed to highlight the Central Truth of the passage and help students apply that truth to their daily lives.

- Each session contains four **Now What?** questions.
- The questions are numbered “09–12” and are included in the *Daily Discipleship Guide* so that you can guide students to look at particular discussion questions.

DAILY devotions

Each session concludes with the following:

- **7 ARROWS OF BIBLE READING:** These questions are designed to help students learn how to study the Bible carefully and apply it thoughtfully to their lives.
- **LEADER CHALLENGE:** This section includes the memory verse in the *Daily Discipleship Guide* that students will be memorizing each week, as well as a reminder to check in with students midweek to connect with them and remind them to make time for their Daily Devotions.
- The Scripture texts of the five Daily Devotions that are included in students' *Daily Discipleship Guide* (item 005646504) are also listed here. These devotions are perforated so that students can tear them out if you prefer to hold on to their *Daily Discipleship Guide* for them. We encourage you to take time on your own to review the devotions that students will be studying.

contents

FEATURES

| | |
|----------------------------|-----|
| introduction to Genesis | 2 |
| outline of Genesis 20–50 | 3 |
| how to use | 4 |
| notes | 109 |
| sources | 110 |
| 7 arrows for Bible reading | 111 |

SESSIONS

| | |
|---------------------------------|-----|
| SESSION 1: A Call for Sacrifice | 5 |
| SESSION 2: God's Guidance | 13 |
| SESSION 3: A Son's Deceit | 21 |
| SESSION 4: Jacob's Dream | 29 |
| SESSION 5: The Empty Tomb | 37 |
| SESSION 6: Multiplied Blessings | 45 |
| SESSION 7: Wrestling with God | 53 |
| SESSION 8: Direction & Identity | 61 |
| SESSION 9: The Favorite Son | 69 |
| SESSION 10: In the Prison | 77 |
| SESSION 11: Rags to Riches | 85 |
| SESSION 12: A Family Reunion | 93 |
| SESSION 13: Good from Evil | 101 |

X

EXPLORE THE BIBLE

FOR STUDENTS

DAILY DISCIPLESHIP GUIDE
SPRING 2024
VOLUME 10 • NUMBER 3

CHRIS BROWN
CONTENT EDITOR

RICK PRALL
WRITER

APRIL-LYN CAOUCETTE
PRODUCTION EDITOR

KAITLIN REDMOND
GRAPHIC DESIGNER

BRETT BUCKLAND
MANAGER, STUDENT ONGOING STUDIES

BEN TRUEBLOOD
DIRECTOR, STUDENT MINISTRY

Send questions/comments to:
Chris Brown, Student Publishing
chris.brown@lifeway.com
Lifeway Christian Resources, 200 Powell Place,
Suite 100, Brentwood, TN 37027

PRINTED IN THE UNITED STATES OF AMERICA.

Explore the Bible: Leader Guide (ISSN: 2377-0341; Item 005686026) is published quarterly by Lifeway, 200 Powell Place, Suite 100 Brentwood, TN 37027, © 2023 Lifeway

For ordering or inquiries, visit www.lifeway.com, or write Lifeway Customer Service, 200 Powell Place, Suite 100, Nashville, TN 37027. For orders with three or more issues shipped to one address, mailed monthly, at the ministry rate, visit lifeway.com/mediaoptions, fax (615) 251-5933, or write to the above address.

We believe that the Bible has God for its author; salvation for its end; and truth, without any mixture of error, for its matter and that all Scripture is totally true and trustworthy. To review Lifeway's doctrinal guideline, please visit www.lifeway.com/doctrinalguideline.

CSB—Unless otherwise noted, all Scripture quotations are taken from the Christian Standard Bible®, Copyright © 2017 by Holman Bible Publishers. Used by permission. Christian Standard Bible® and CSB® are federally registered trademarks of Holman Bible Publishers.



EDITOR'S note

Although we are made in God's image, sin distorts our ability to display God's beauty and character to the world. Each of us has a bent to give our devotion and allegiance to the created rather than to the Creator. We are desperate for a cure, and the Lord, in His kindness, meets our greatest need.

In Genesis 20–50, the narrative focuses on Abraham and his family. It is through Abraham that God promised to create a nation that would be a source of blessing and hope for the world. However, this family was plagued by deception, favoritism, greed, sibling rivalry, and violence. They, too, were desperate for the cure. As unfaithfulness reared its ugly head time and time again, God would prove Himself to be the faithful One who remained committed to His people and His covenant with them.

Genesis is a reminder to us that sin does not have the final word. Just as we can trace tragedy through the lives of these patriarchs and matriarchs, we can all the more trace God's hand of protection and care.

CHRIS BROWN

INTRODUCTION TO genesis

The book of Genesis is the great book of beginnings in the Bible. Genesis permits us to view the beginning of a multitude of realities that shape our daily existence: the creation of the universe and the planet Earth; the origins of plant and animal life; and the origins of human beings, marriage, families, nations, industry, artistic expression, religious ritual, prophecy, sin, law, crime, conflict, punishment, and death.

AUTHOR AND BACKGROUND

Since pre-Christian times, authorship of the Torah (the five books that include the book of Genesis) has been attributed to Moses, an enormously influential Israelite leader from the second millennium BC with an aristocratic Egyptian background. Even though Genesis is technically anonymous, both the Old and New Testaments unanimously recognize Moses as the Torah's author. Genesis, the first book of the Torah, provides both the universal history of humankind and the patriarchal history of the nation of Israel.

MESSAGE AND PURPOSE

Genesis lays the groundwork for everything else we read and experience in Scripture. Through Genesis we understand where we came from, how we got in the fallen state we are in, and the beginnings of God's gracious work on our behalf. Genesis unfolds God's original purpose for humanity.

Genesis provides the foundation from which we understand God's covenant with Israel that was established with the giving of the law. For the Israelite community, the stories of the origins of humanity, sin, and the covenant relationship with God helped them understand why God gave them the law.

OUTLINE OF genesis

(WINTER 2023-24 STUDY)

- I. God's Perfect Creation (1:1–2:25)
- II. Humanity's Fall (3:1–3:24)
- III. Adam's Family and Sin's Results (4:1–6:8)
- IV. Noah's Family and the Flood (6:9–9:29)
- V. The Nations and the Tower of Babylon (10:1–11:26)
- VI. Abraham and God's Covenant (11:27–19:38)

(SPRING 2024 STUDY)

- VII. Isaac and the Promise (20:1–25:11)
- VIII. Ishmael's Family (25:12–18)
- IX. Rivalry: Esau and Jacob (25:19–35:29)
- X. Esau's Family: Father of the Edomites (36:1–37:1)
- XI. Jacob's Family: Joseph and His Brothers (37:2–50:26)



how to use THIS STUDY

The *Daily Discipleship Guide* is designed with students in mind and accomplishes two goals: it helps students follow along with each session of study and provides weekly opportunities to continue studying the Bible on your own. It does this by providing an outline of each session and five days of **Daily Devotions** that primarily come out of the book of the Bible you are studying each session this quarter.

The *Daily Discipleship Guide* opens with **This Week's Focus**, a short introduction to the theme(s) that will be unpacked in each session. This section introduces the **Central Truth** in a manner that connects to the context in which you live. The **Central Truth** is the main point of the Bible passage you will be unpacking throughout the session.

EXPLORE **scripture**

The next page you will find in each Session of the *Daily Discipleship Guide* is the **Explore Scripture** page. This section includes the passage of Scripture you will be studying this week, broken down into the three sections that will be studied in turn so that you can follow along with your leader.

CONVERSATION **questions**

This portion of the study is designed to help you walk through the Scriptures of each session with your leader. The **Discussion Questions** are designed to help you to dig into Scripture and train you to look to the Bible for the answers. All questions are numbered “01–08” and correspond to the discussion questions found in the Conversation section of the **Leader Guide** so that you and your Bible study leader can be on the same page.

- This section also includes four different types of Context notes: **History, Culture, Theology,** and **Context** which train students to better understand how to study the Bible and apply it to the world in which you live.

NOW **what?**

This portion of the study is designed to highlight the Central Truth of the passage and help you apply that truth to your daily life.

- Each session contains four **Now What?** Questions.
- The questions are numbered “09–12” and are also included in the **Leader Guide** so that you can follow along with your leader during the group session.

DAILY **devotions**

Each session concludes with five Daily Devotions designed to train you how to study the Bible on your own. These devotions are built around the **Seven Arrows of Bible Reading**. More than just understanding what the Bible says, this Bible reading method gives you simple tools to unpack what the Bible has to say about God, about us, and about the world we live in. Most importantly, the **Daily Devotions** will challenge you to apply the gospel to how you live at home, school, and in your community. These devotions are perforated so that you can tear them out if you prefer to leave your *Daily Discipleship Guide* at your church or with your leader. The **Leader Guide** includes a list of the passages of Scripture covered in these devotions so that your leader can follow along with your daily readings and follow up with you on your progress.